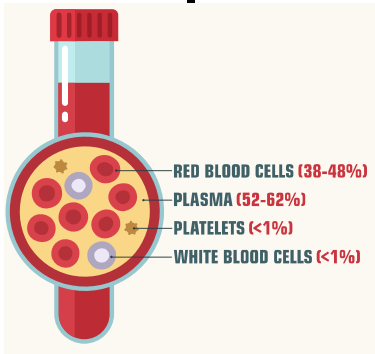


**Blood****plasma**

watery liquid that blood cells are suspended in and waste is carried

**red blood cells**

carry oxygen

**white blood cells**

defend us and attack threats

**platelets**

clot blood when wounds occur

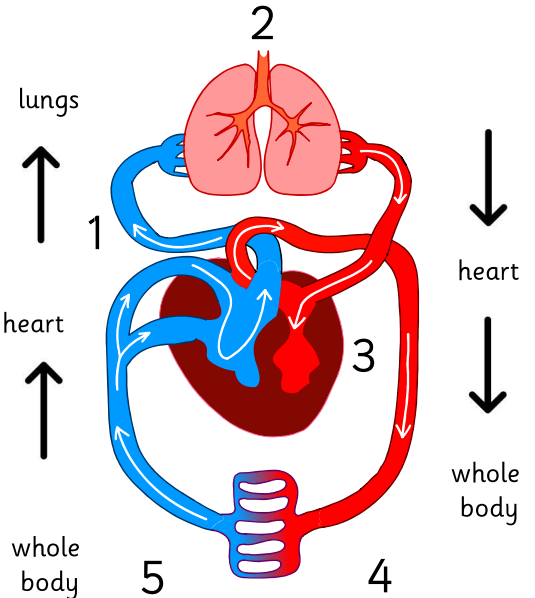
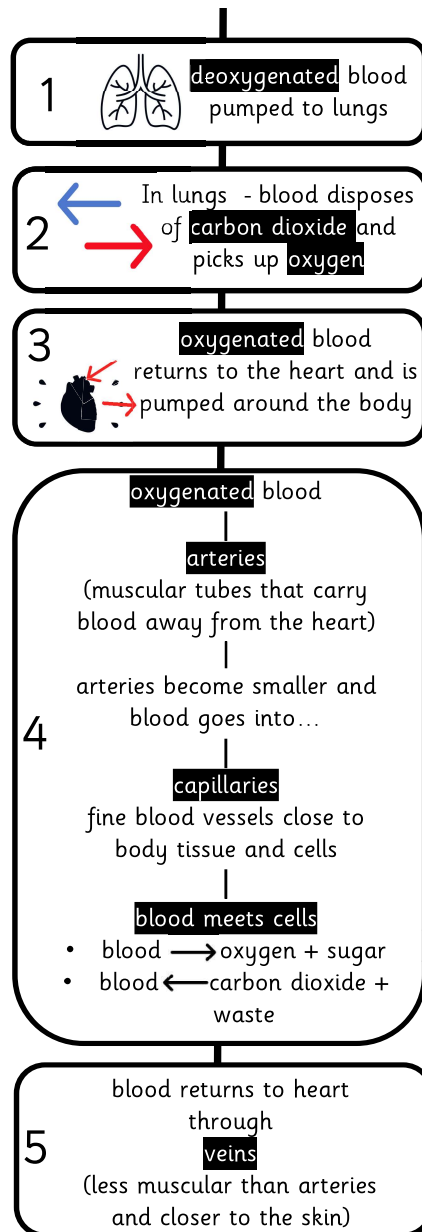
carries nutrients  
carries oxygen  
cleans waste  
protects



arteries only carry deoxygenated blood

blood is **NOT blue**  
Only blue to show difference in blood through diagrams

blood is **bright red** (oxygenated) or **dark red** (deoxygenated)

**Circulatory system****oxygen**

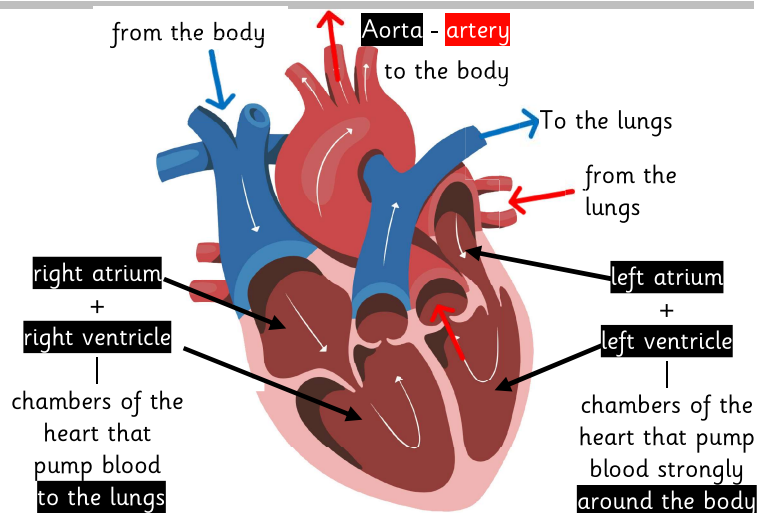
an element (gas) vital for life – red blood cells carry oxygen (oxygenated)

**deoxygenated**

blood that has given oxygen to cells and taken away carbon dioxide waste (scientific diagrams show this blood as **blue**, but we know it is **dark red**)

**carbon dioxide**

waste gas produced by cells and removed by plasma in the blood

**The heart**

right side receives blood from the body and sends it to the lungs

left side receives blood from the lungs and pumps it away from the heart