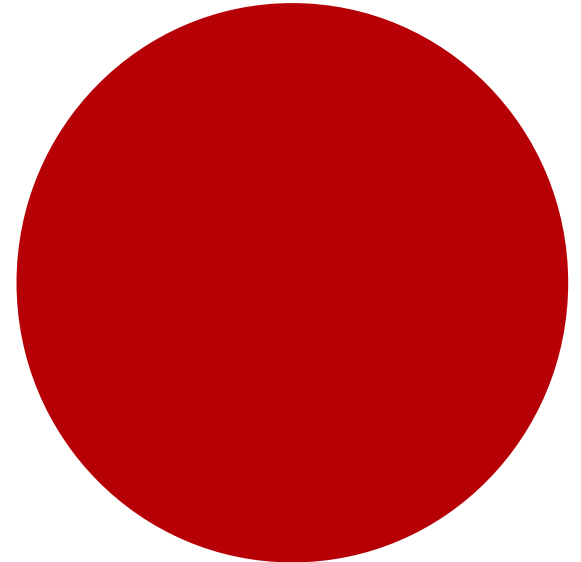
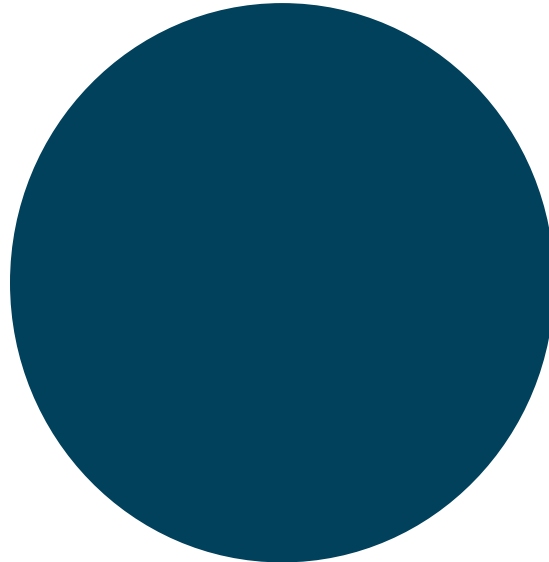
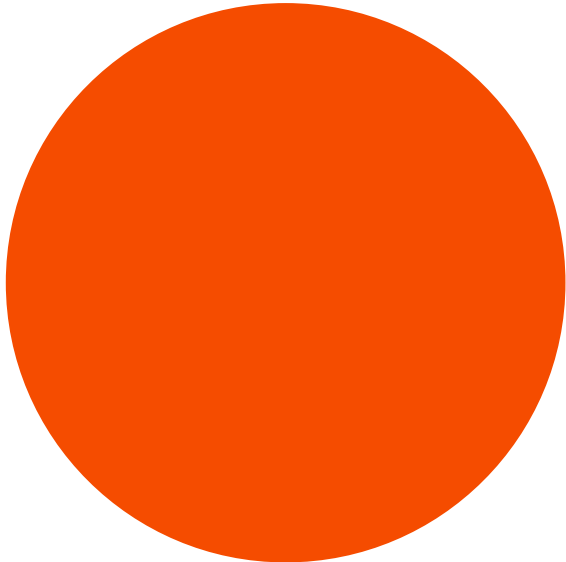




Map Skills

**Royal
Geographical
Society**
with IBG

Advancing geography
and geographical learning





What are maps and globes like?

**Royal
Geographical
Society**

with IBG

Advancing geography
and geographical learning



How are maps and
globes different?



Is a map flat and
smooth?

Is the Earth flat?

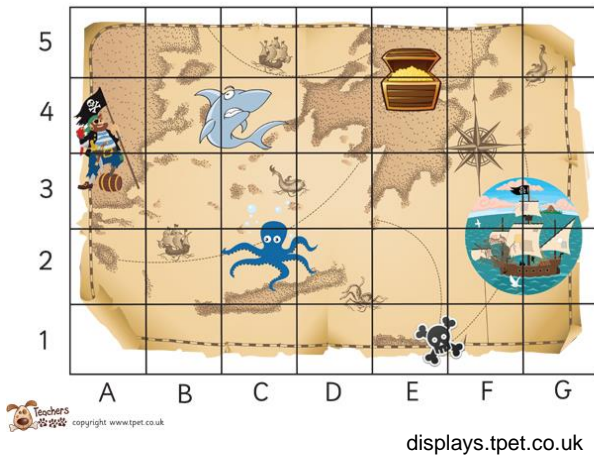
Why are
maps
useful?

What 3-D shape is the
globe?

Look at a range of maps, plans and globes

**Royal
Geographical
Society**
with IBG

Advancing geography
and geographical learning



Wikipedia Commons



Wikipedia Commons

Have you seen maps like this before?

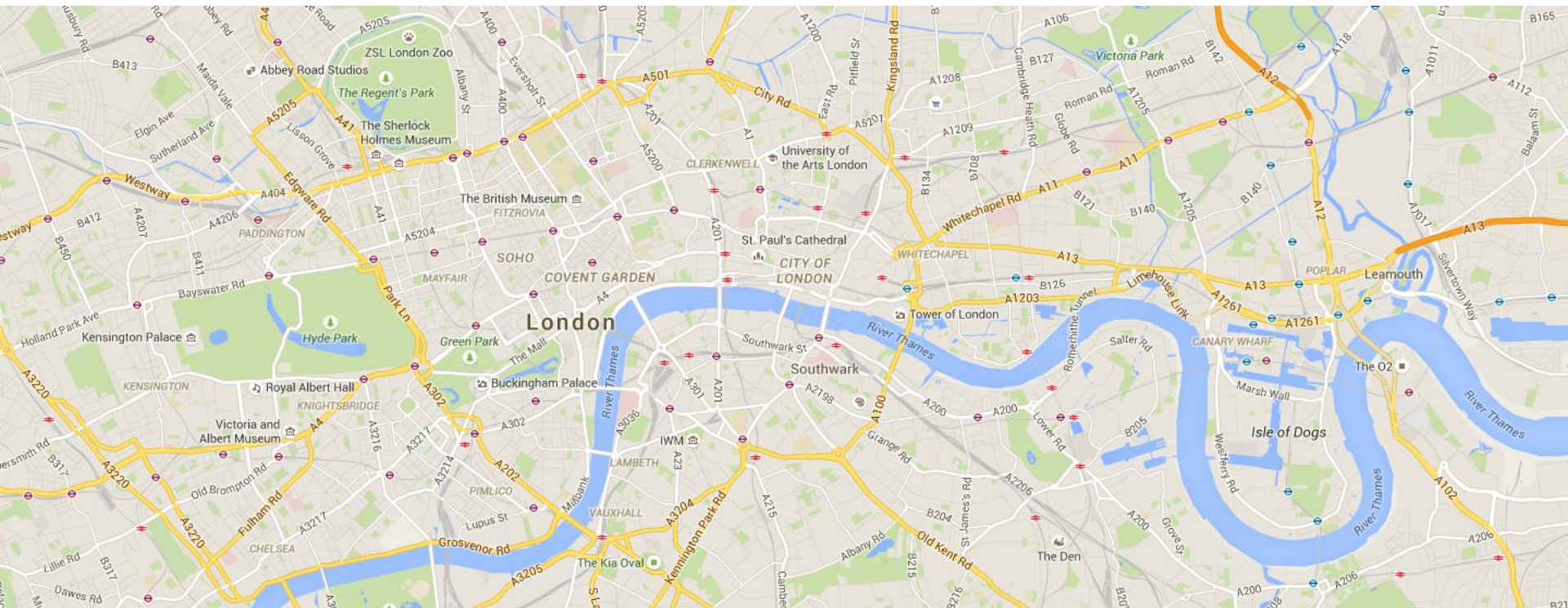
Where have you seen them?

Can you find other examples?

Map of London

**Royal
Geographical
Society**
with IBG

Advancing geography
and geographical learning



What can you see on this map?

Source: google maps



What do people use maps for?

- Maps are 2-D drawings of our world from above or a 'bird's eye view'.
- They help us find our way around and show where different places are in relation to each other (**distance and direction**).
- Maps can show small or large areas: from room plans to world maps.

The world from above: a bird's eye view

**Royal
Geographical
Society**
with IBG

Advancing geography
and geographical learning

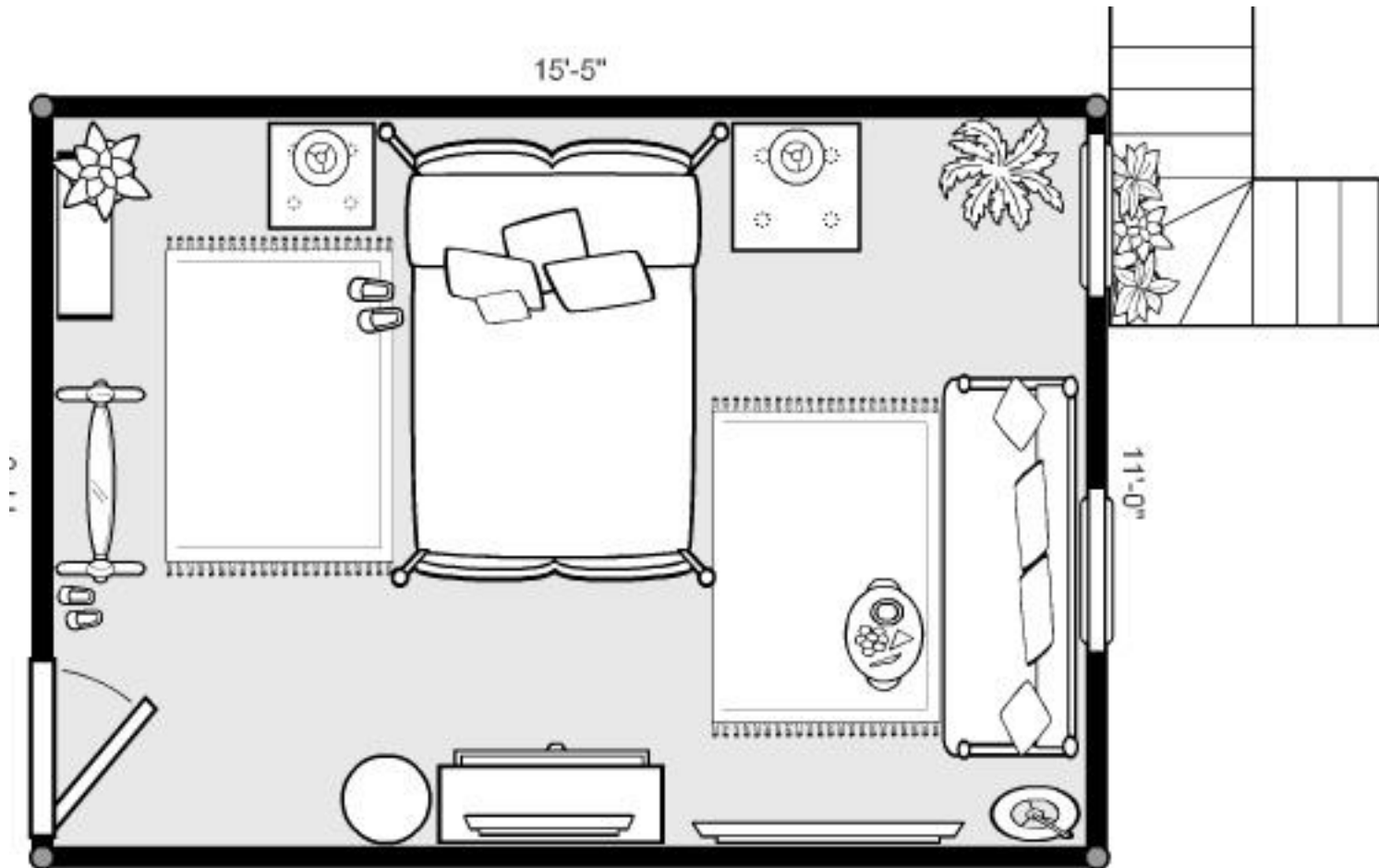


Project 365 #200: 190715 You Can See...© Pete, Flickr

Floor plans are a view from above

**Royal
Geographical
Society**
with IBG

Advancing geography
and geographical learning

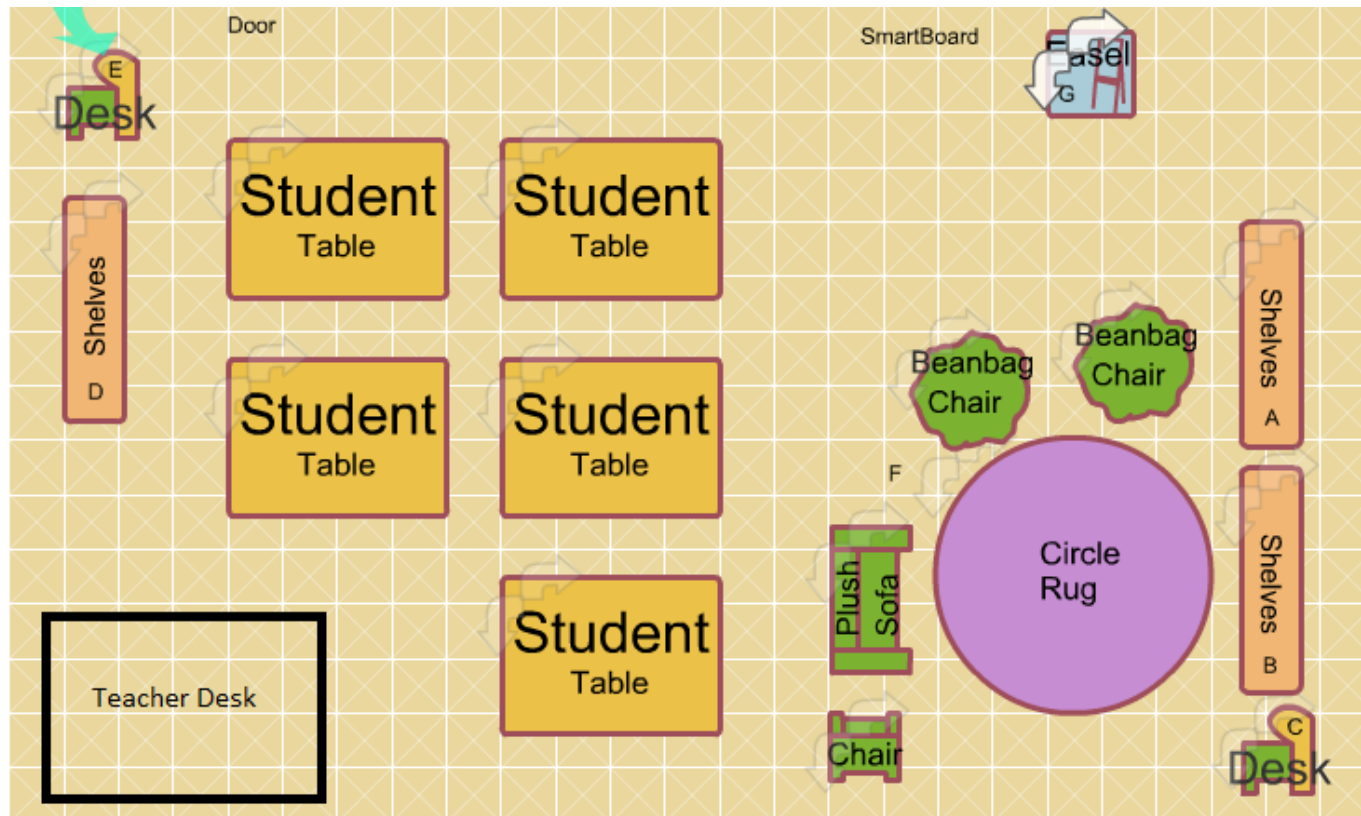


Mynextbedroom © Elif Altinbasak, Flickr

What can you see on this classroom plan?

**Royal
Geographical
Society**
with IBG

Advancing geography
and geographical learning



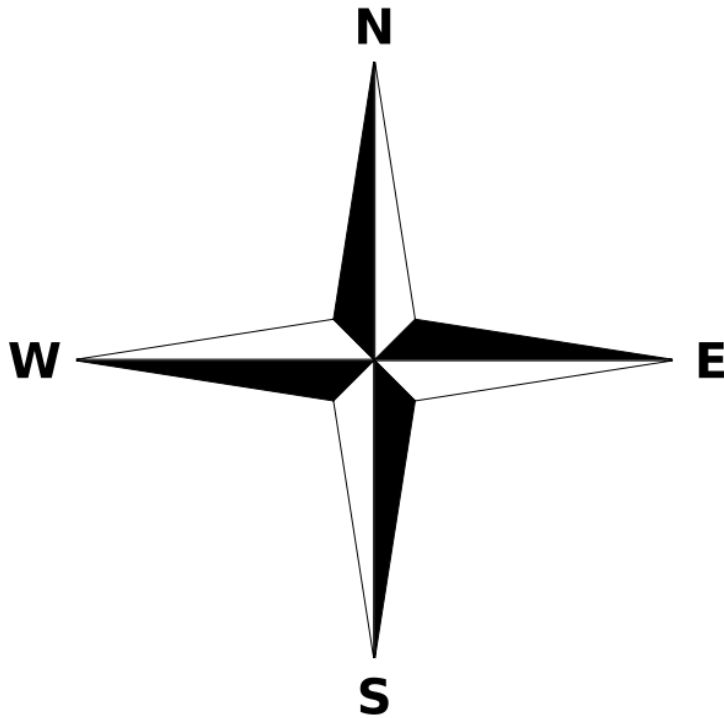
How would our classroom look from above?



Direction: Compass points

**Royal
Geographical
Society**
with IBG

Advancing geography
and geographical learning



© Wikipedia

NORTH

EAST

SOUTH

WEST

Compass and Direction

**Royal
Geographical
Society**
with IBG

Advancing geography
and geographical learning



Map Skills Subject Knowledge Animation © RGS-IBG



Draw a plan of a room in your house.

- Look around the room. What can you see?
- Try and draw what objects would look like from above, or from a 'bird's eye view'.
- Try and put everything in the right position. Can you add the four compass points?
 - You will need a compass to help you find North



Toy detectives

**Royal
Geographical
Society**
with IBG

Advancing geography
and geographical learning

- Play 'Toy Detectives'. Hide a toy in the room and mark its location on the plan you have made.
- Ask someone in your family to be the detective. Can they find the toys using your plan?

